



# Lincoln Street Bridge Rehabilitation

Town of Dover-Foxcroft, Maine

April 2024

Jason Gallant, PE  
Westley Nuhn, PE  
Owen Chaplin, PE



**WRIGHT-PIERCE**   
Engineering a Better Environment

# Presentation Overview

---

**Introductions**  
**Project Overview**  
**Assumed Project Limits**  
**Design Process**  
**Project Timeline**  
**Questions**  
**Next Steps**  
**Contact Information**  
**Thank You**

# Introductions

---



**Jason Gallant, PE**  
**Project Manager**



**Westley Nuhn, PE**  
**Bridge Lead**  
**Project Engineer**



**Owen Chaplin, PE**  
**Roadway Lead**  
**Project Engineer**



# Project Overview



## Existing Conditions

- 16.8-foot span, reinforced concrete slab on stone abutments
- Latest MaineDOT inspection – November 2022.
  - Condition Rating 4 (poor condition)
- Transportation Features:
  - Two-way travel lanes
  - Angled parking on south side
  - Parallel parking on north side
  - Partial sidewalks on both sides
- Pavement in poor condition
- Reoccurring sinkhole at Bob's hardware store
- Businesses located on both sides of roadway

# Project Overview

---

## Background

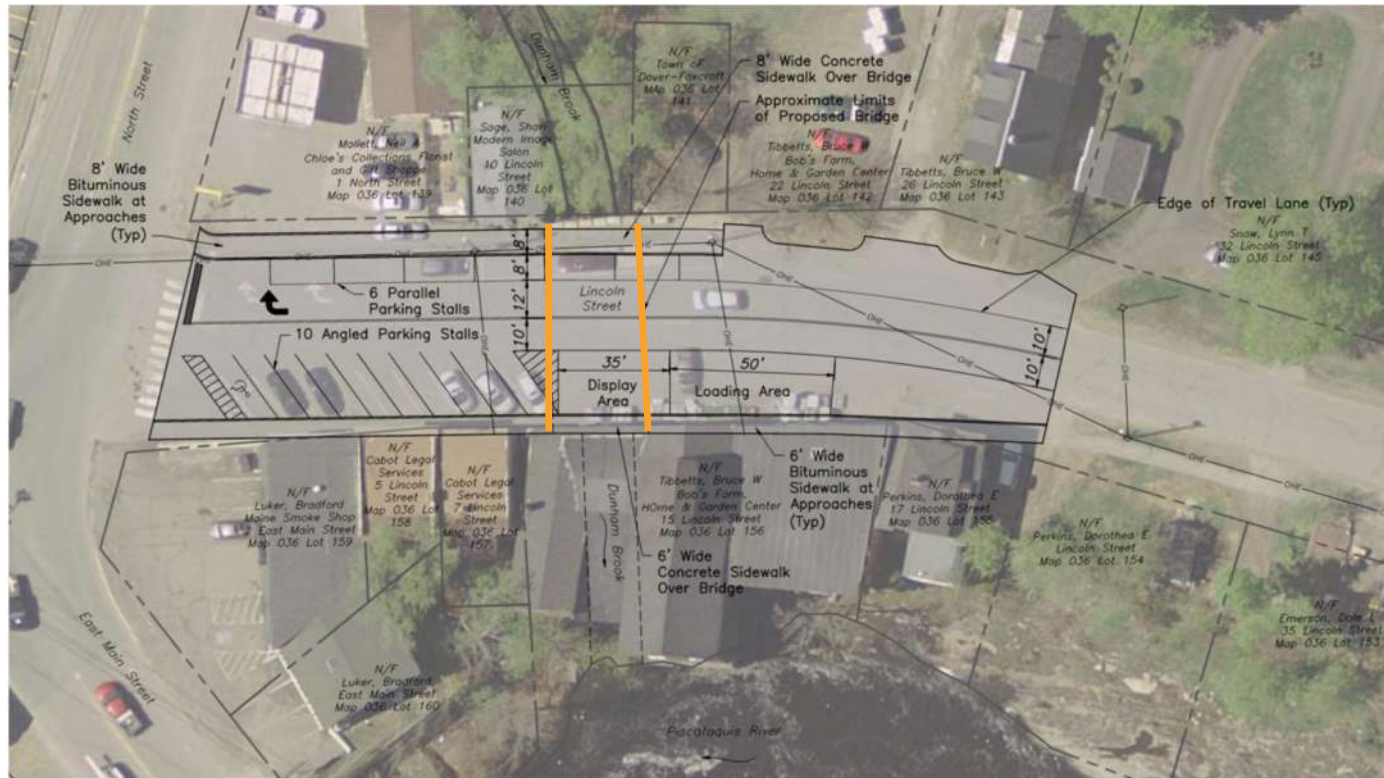
- Bridge built in 1960
- DOT Bridge inspection results
- Ongoing maintenance issues
- Project awarded Federal Emergency Management Agency (FEMA) through Congressional Direct Spending
- Solicited engineering proposals in December 2023
- Awarded to Wright-Pierce in February 2024

## Wright-Pierce's Role

- Data Collection
  - Survey/subsurface/natural resource
  - Utility coordination
- Preliminary Design
  - Alternatives analysis
  - Preliminary design report
  - Permitting
- Final Design
  - Right-of-way
  - Bid documents
  - Final Design
- Bidding
  - Solicit construction bids

# Assumed Project Limits

## Conceptual Plan



- Paving limits extend from North Street to the 32 Lincoln Street driveway apron
- Bridge replacement within limits of Town ROW
- Retore existing parking stalls
- Restore sidewalk at northern end of Lincoln Street
- Connect sidewalk along southern end of Lincoln Street

# Design Process

---

1

Project  
Data  
Collection

2

Preliminary  
Design

3

Final  
Design

4

Bidding and  
Construction

# Project Schedule

| TASKS   | 2024 |     |     |     |     |     |     |     |     |     |     |   |
|---|------|-----|-----|-----|-----|-----|-----|-----|-----|-----|-----|---|
|   | FEB  | MAR | APR | MAY | JUN | JUL | AUG | SEP | OCT | NOV | DEC |   |
| <b>TASK 1 – Data Collection</b>                     |      |     |     |     |     |     |     |     |     |     |     |   |
| Project Coordination                                | █    | █   |     |     |     |     |     |     |     |     |     |   |
| Local Concerns Meeting                              |      |     | ★   |     |     |     |     |     |     |     |     |   |
| Survey Collection                                   | █    | █   |     |     |     |     |     |     |     |     |     |   |
| Subsurface Exploration                              |      | █   |     |     |     |     |     |     |     |     |     |   |
| <b>TASK 2 – Preliminary Design</b>                  |      |     |     |     |     |     |     |     |     |     |     |   |
| Preliminary Design Report                           |      |     | █   | █   | █   |     |     |     |     |     |     |   |
| Preliminary Design & OPCC                           |      |     | █   | █   | █   |     |     |     |     |     |     |   |
| QA/QC   |      |     |     | █   | █   |     |     |     |     |     |     |   |
| Public Meetings                                     |      |     |     | ★   | ★   |     |     |     |     |     |     |   |
| Environmental Permitting                            |      | █   | █   | █   | █   | █   | █   |     |     |     |     |   |
| <b>TASK 3 – Final Design</b>                        |      |     |     |     |     |     |     |     |     |     |     |   |
| 75% Design & OPCC (PIC)                             |      |     |     |     | █   | █   |     |     |     |     |     |   |
| Utility Coordination                                |      |     | █   | █   | █   | █   | █   | █   |     |     |     |   |
| 95% Design, Specifications, & OPCC (PSE)            |      |     | █   | █   | █   | █   | █   | █   |     |     |     |   |
| QA/QC   |      |     |     |     |     | █   | █   | █   |     |     |     |   |
| 100% Bid Documents and Phase I Close Out            |      |     |     |     |     | █   | █   | █   |     |     |     |   |
| <b>TASK 4 – Bid Phase Assistance (CDS Phase II)</b> |      |     |     |     |     |     |     |     |     |     |     |   |
| Bid Phase   |      |     |     |     |     |     |     |     | █   | █   | █   | █ |



# QUESTIONS

---

## Next Steps

---



- **Finalize data collection phase**
- **Incorporate public feedback**
- **Preliminary design**
- **May 15<sup>th</sup> – public presentation of the preliminary design**

## CONTACT INFORMATION

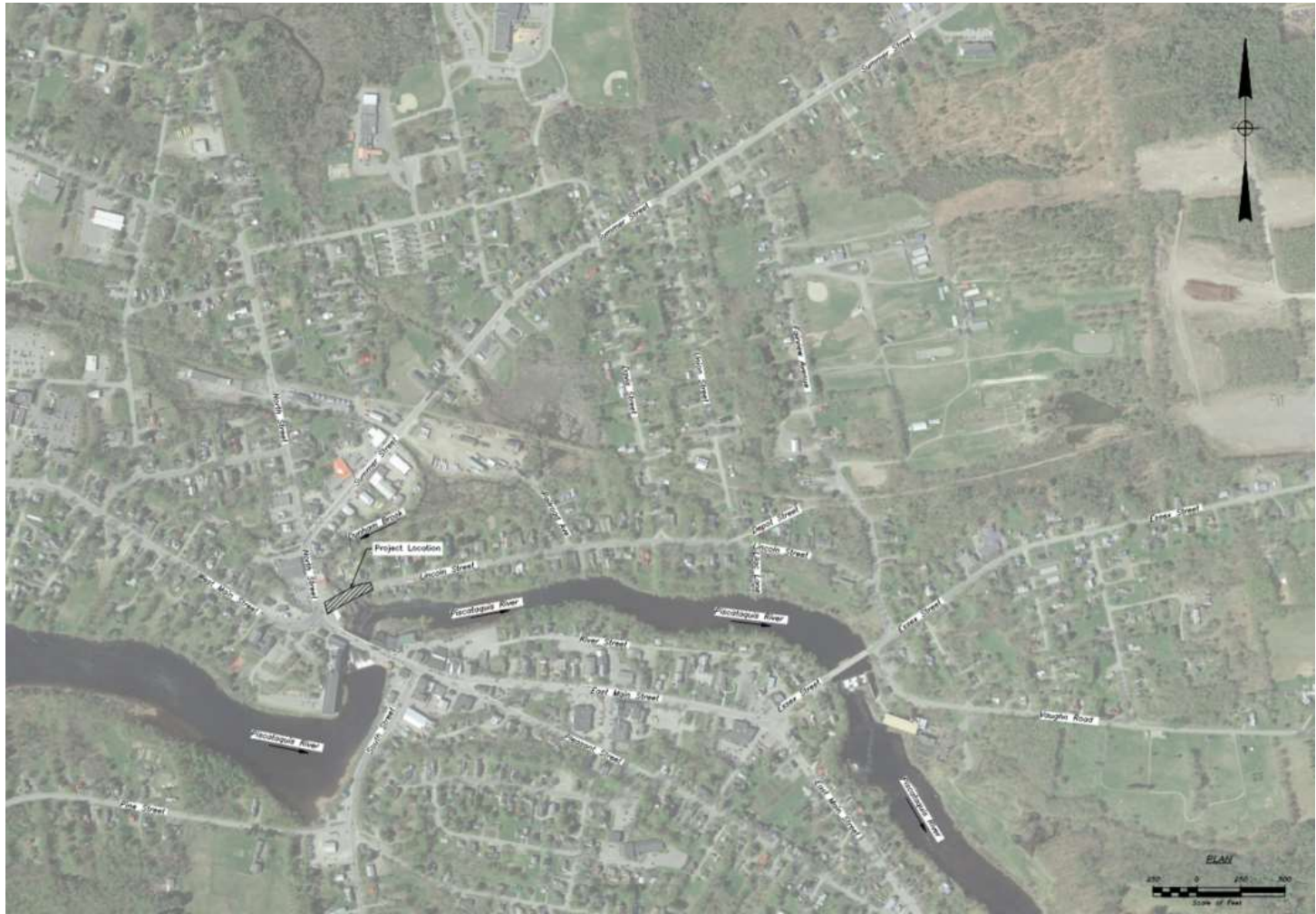
**Jack Clukey**, Town Manager – [jclukey@dover-foxcroft.org](mailto:jclukey@dover-foxcroft.org) | 207.564.3318 x1014

**Jason Gallant, PE** – [jason.gallant@wright-pierce.com](mailto:jason.gallant@wright-pierce.com) | 603.570.7166

# THANK YOU

---

# Aerial







# Photo Plan and Section



PHOTO LOCATION PLAN  
Scale: 1"=40'



PHOTO 1  
UPSTREAM ELEVATION



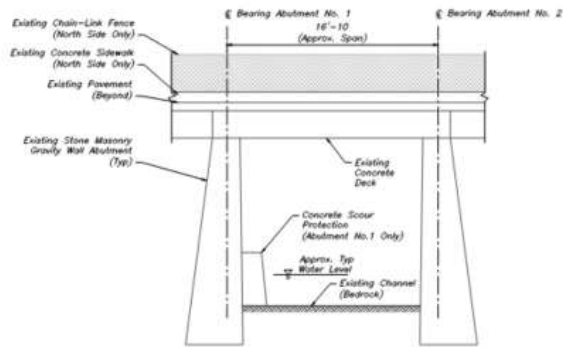
PHOTO 2  
UPSTREAM



PHOTO 3  
SIDEWALK



PHOTO 4  
DOWNSTREAM LOOKING UPSTREAM



EXISTING BRIDGE LONGITUDINAL SECTION  
Scale: 1/4"=1'-0"



PHOTO 5  
WEST APPROACH



PHOTO 6  
EAST APPROACH