

# TOWN OF DOVER-FOXCROFT LAND USE DISTRICT INSET MAP

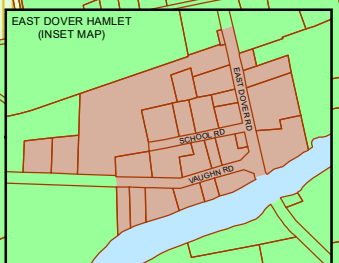
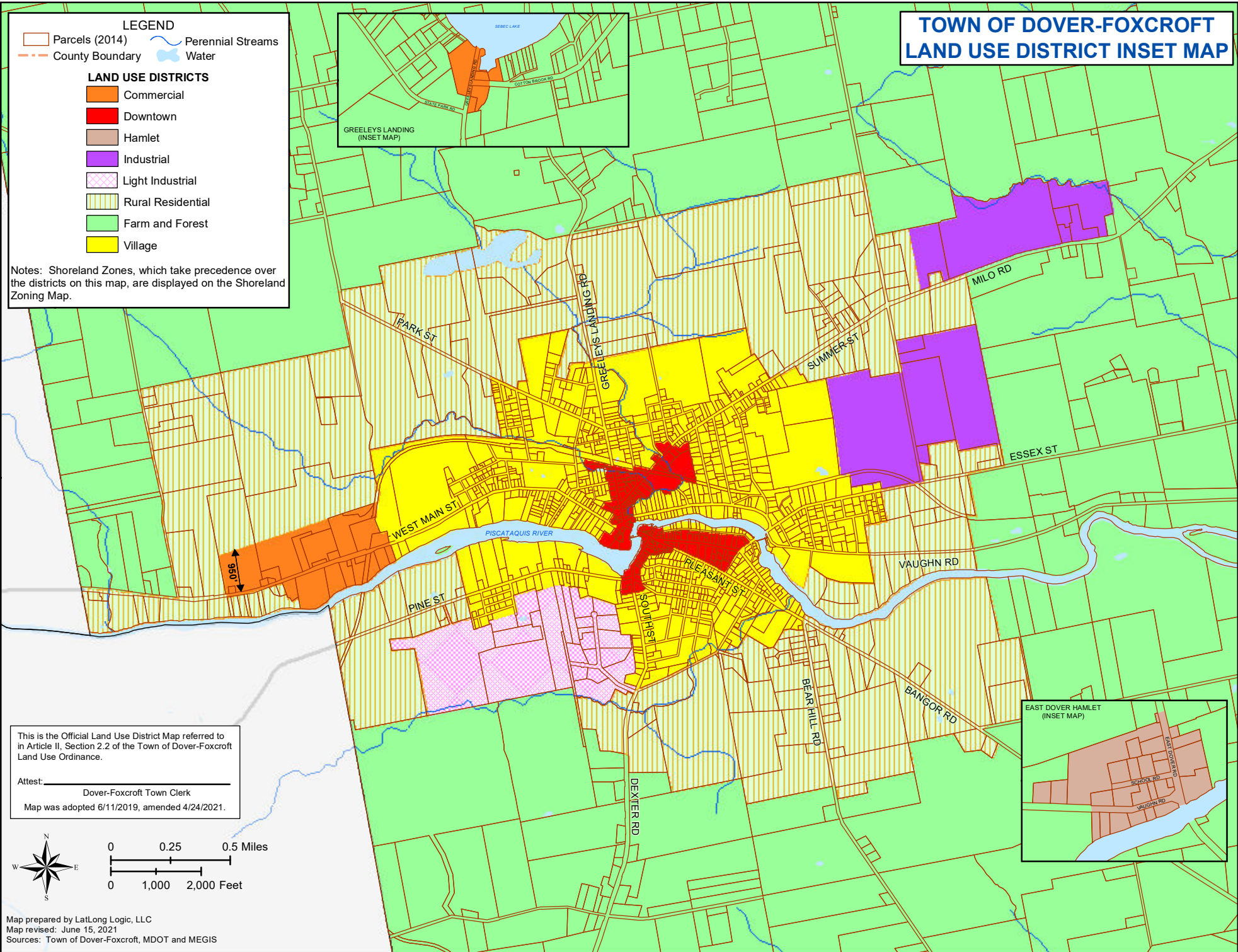
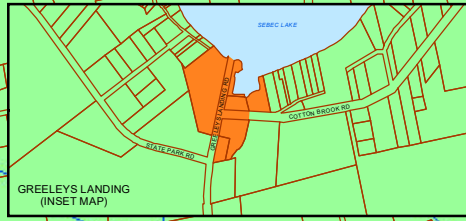
**LEGEND**

- Parcels (2014)
- County Boundary
- Perennial Streams
- Water

**LAND USE DISTRICTS**

- Commercial
- Downtown
- Hamlet
- Industrial
- Light Industrial
- Rural Residential
- Farm and Forest
- Village

Notes: Shoreland Zones, which take precedence over the districts on this map, are displayed on the Shoreland Zoning Map.



This is the Official Land Use District Map referred to in Article II, Section 2.2 of the Town of Dover-Foxcroft Land Use Ordinance.

Attest: \_\_\_\_\_  
 Dover-Foxcroft Town Clerk  
 Map was adopted 6/11/2019, amended 4/24/2021.

