

TOWN OF DOVER-FOXCROFT LAND USE DISTRICT MAP

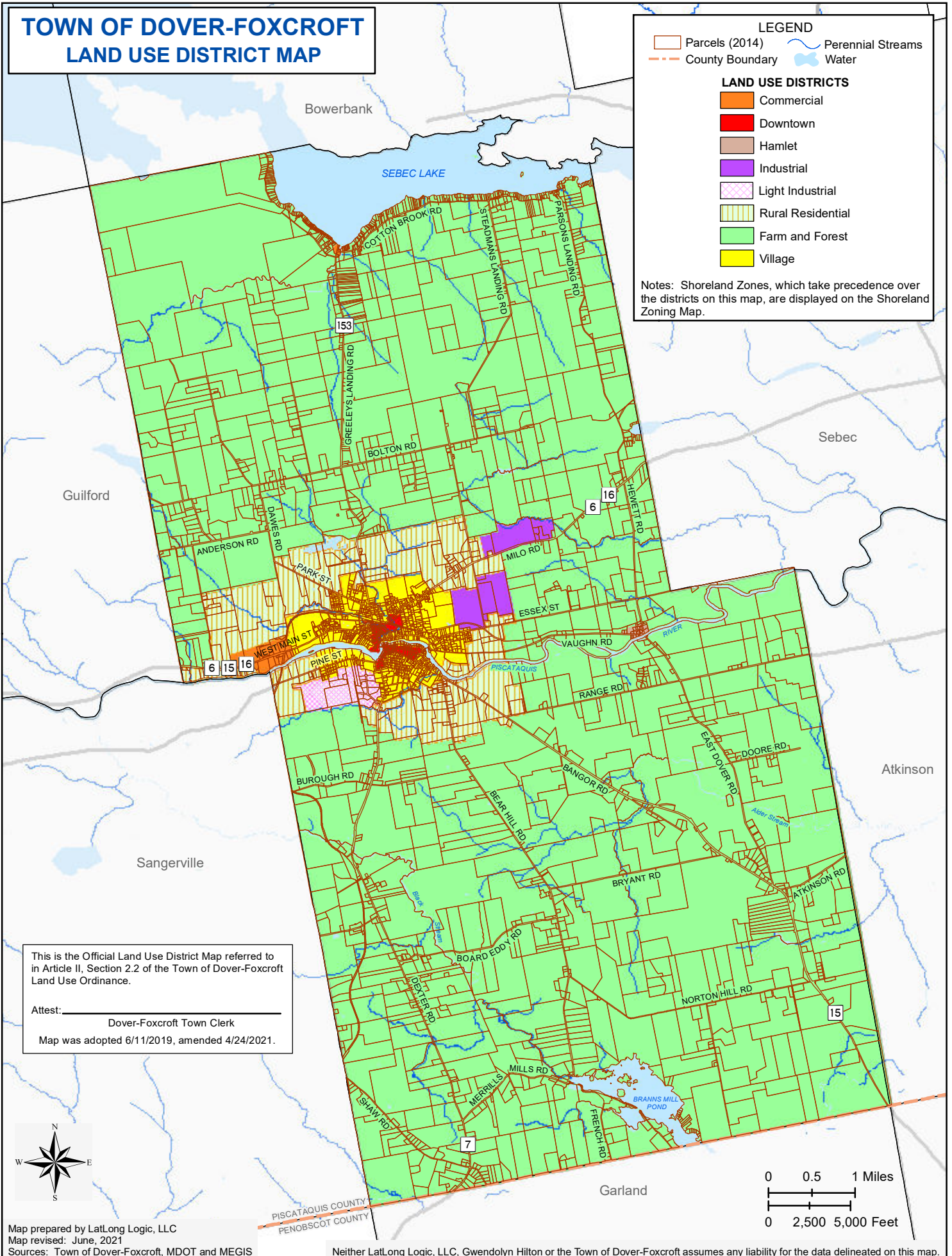
LEGEND

- Parcels (2014)
- Perennial Streams
- County Boundary
- Water

LAND USE DISTRICTS

- Commercial
- Downtown
- Hamlet
- Industrial
- Light Industrial
- Rural Residential
- Farm and Forest
- Village

Notes: Shoreland Zones, which take precedence over the districts on this map, are displayed on the Shoreland Zoning Map.



This is the Official Land Use District Map referred to in Article II, Section 2.2 of the Town of Dover-Foxcroft Land Use Ordinance.

Attest: _____
 Dover-Foxcroft Town Clerk
 Map was adopted 6/11/2019, amended 4/24/2021.

